



Christmas Gift Bags



**Materials:**

♥ Approx 60g of DK yarn. Here Scheepjes Secret Garden has been used in the following quantities and colours;

The Christmas Tree Bag –

1 x 50g ball of Wishing Well (735) and scraps of Wisteria Arch (733)

The Rudolph Bag –

1 x 50g ball of Picket Fence (734) and scraps of Lily Pond (709)

The Snowflake Bag –

1 x 50g ball of Bird Bath (736) and scraps of Rambling Blooms (705)

♥ 4mm hook

♥ Ribbon to tie your bag

♥ Buttons for embellishing (optional)

♥ darning needle

**Stitches used:**

ch = chain

sc = single crochet

dc = double crochet

**Abbreviations:**

frm = from

rpt = repeat

**Gauge (not essential):**

17 stitches x 18 rows = 10cm x 10cm using sc

**Finished size:**

18cm high by 15cm wide or 7” high x 6” wide

# Start

*Tip; There should be 25 sc in each sc row.*

## **Ch26.**

### **Row 1;**

Work 1sc in 2<sup>nd</sup> ch frm hook and in each ch across, turn.

### **Row 2-5;**

ch1, work 1sc in each sc across, turn.

### **Row 6;**

ch3 (counts as 1dc and ch1), skip first 2 sc, 1dc in next sc, \* ch1, skip 1sc, 1dc in next sc \* rpt frm \* to end, turn (12 x 1 ch ribbon spaces made).



### **Row 7;**

ch1, work 1sc in each dc and 1 ch space across to end, working your last sc in top of 2<sup>nd</sup> chain from previous row, turn (there should be 25 sc at the end of the row).

### **Row 8 - 31;**

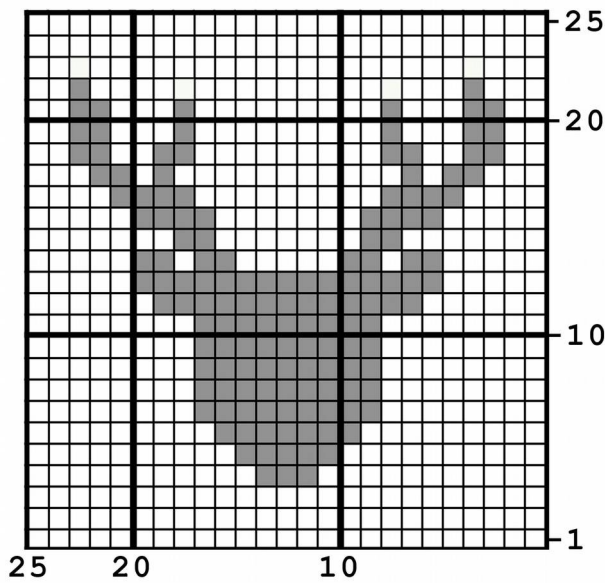
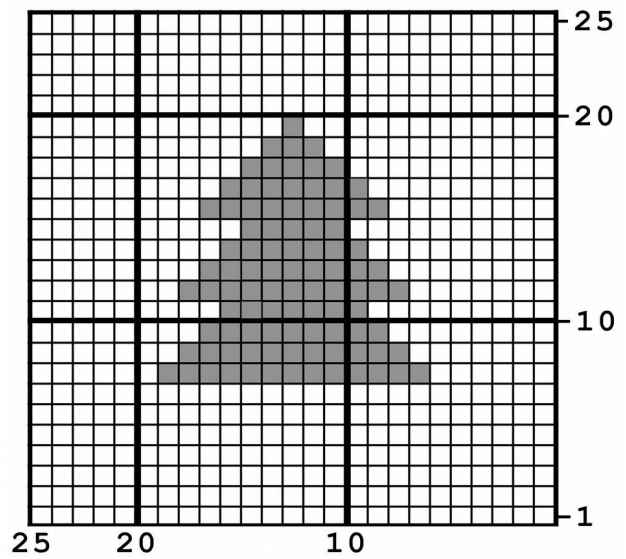
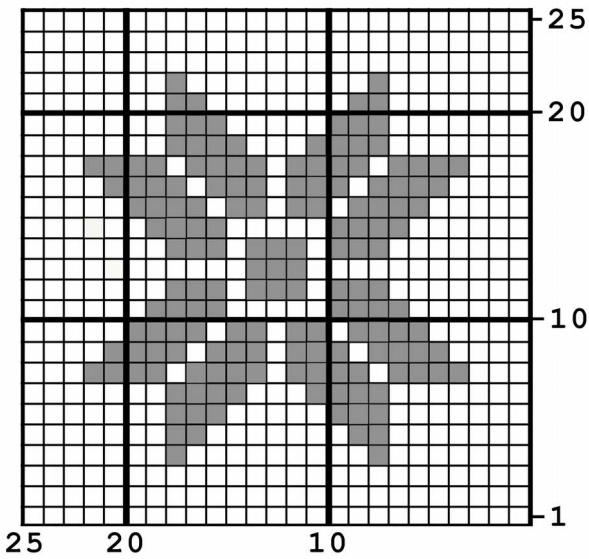
ch1, work 1sc in each sc across, turn.

**Row 32 - 57;**

Choose to work from one of the grids below.

1 square = 1sc and ensure to work 1 turning chain at the end of each row.

*Tip!* Try to keep a good tension when working the strands of yarn across the back of your gift bag. Too loose and the stitches may have gaps, too tight and your bag will not lie flat.



The front and back of your gift bag should look something like this.



Front



Back



Do not break yarn, but continue on to....

**Row 57;**

ch3 (counts as 1dc and ch1), skip first 2 sc, 1dc in next sc, \* ch1, skip 1sc, 1dc in next sc \* rpt frm \* to end, turn (12 x 1 ch ribbon spaces made).

**Row 58;**

ch1, work 1sc in each dc and 1 ch space across to end, working your last sc in top of 2<sup>nd</sup> chain from previous row, turn.

**Row 59 - 62;**

ch1, work 1sc in each sc across, turn. *At the end of row 62, Fasten off and weave in all ends.*



With wrong sides together and ensuring that the ribbon holes line up, sew down the two side edges with a small running stitch.

Turn inside out, thread the holes with pretty ribbon and sew on any buttons such as a star for the Christmas tree and a nose for Rudolph.

Ta-dah! You have made your very own Christmas Gift Bag!



This pattern is protected by copyright. Please do not re-sell, share or duplicate this pattern or design in any way. You may sell what you make with this pattern in small quantities. If you are selling via an internet shop, please link to [www.littledoolally.com](http://www.littledoolally.com). If you have any queries about this pattern, you can send your message to [littledoolally@gmail.com](mailto:littledoolally@gmail.com)



Christmas Gift Bags



**Materials:**

♥ Approx 60g of DK yarn. Here Scheepjes Secret Garden has been used in the following quantities and colours;

The Christmas Tree Bag –

1 x 50g ball of Wishing Well (735) and scraps of Wisteria Arch (733)

The Rudolph Bag –

1 x 50g ball of Picket Fence (734) and scraps of Lily Pond (709)

The Snowflake Bag –

1 x 50g ball of Bird Bath (736) and scraps of Rambling Blooms (705)

♥ 4mm hook

♥ Ribbon to tie your bag

♥ Buttons for embellishing (optional)

♥ darning needle

**Stitches used:**

ch = chain

dc = double crochet

tr = treble crochet

**Abbreviations:**

frm = from

rpt = repeat

**Gauge (not essential):**

17 stitches x 18 rows = 10cm x 10cm using dc

**Finished size:**

18cm high by 15cm wide or 7” high x 6” wide

# Start

*Tip; There should be 25 dc in each dc row.*

## **Work 26ch.**

### **Row 1;**

Work 1dc in 2<sup>nd</sup> ch frm hook and in each ch across, turn.

### **Row 2-5;**

1ch, work 1dc in each dc across, turn.

### **Row 6;**

3ch (counts as 1tr and 1ch), miss first 2dc, 1tr in next dc, \* 1ch, miss 1dc, 1tr in next dc \* rpt frm \* to end, turn (12 x 1 ch ribbon spaces made).



### **Row 7;**

1ch, work 1dc in each tr and 1ch space across to end, working your last dc in top of 2<sup>nd</sup> chain from previous row, turn (there should be 25 dc at the end of the row).

### **Row 8 - 31;**

1ch, work 1dc in each dc across, turn.

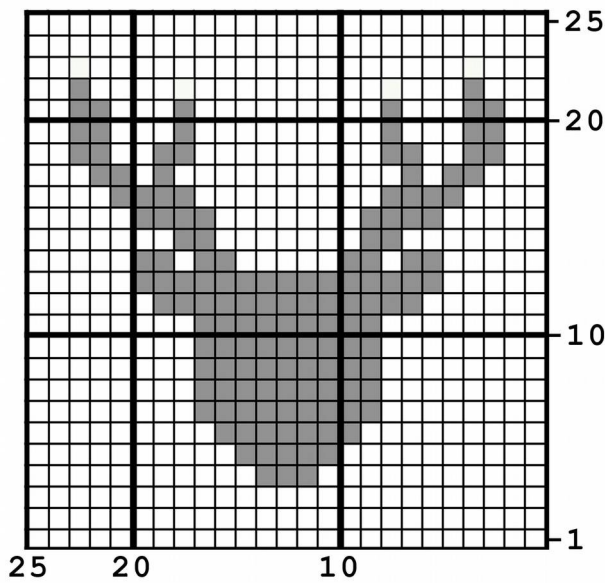
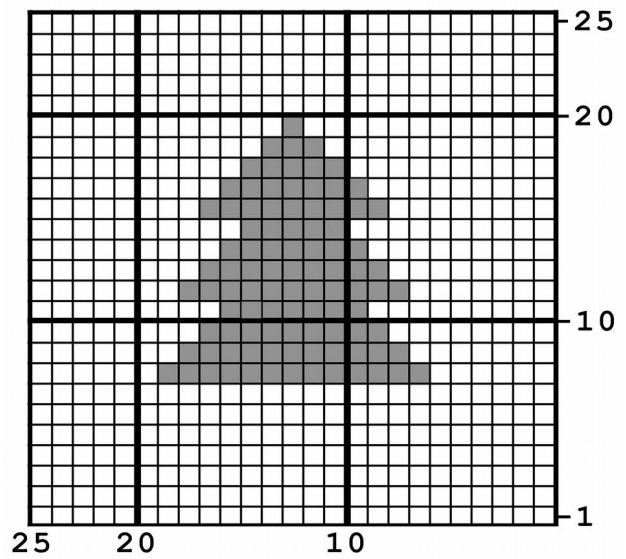
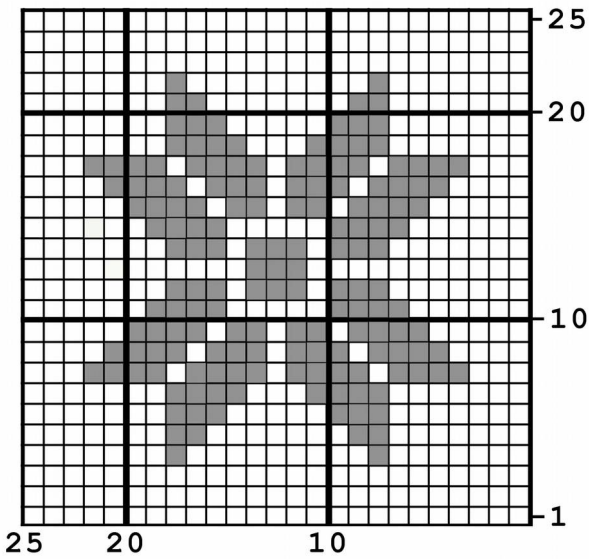


**Row 32 - 57;**

Choose to work from one of the grids below.

1 square = 1dc and ensure to work 1 turning chain at the end of each row.

*Tip!* Try to keep a good tension when working the strands of yarn across the back of your gift bag. Too loose and the stitches may have gaps, too tight and your bag will not lie flat.



The front and back of your gift bag should look something like this.



Front



Back

Do not break yarn, but continue on to....

**Row 57;**

3ch (counts as 1tr and 1ch), miss first 2dc, 1tr in next dc, \* 1ch, miss 1dc, 1tr in next dc \* rpt frm \* to end, turn (12 x 1 ch ribbon spaces made).

**Row 58;**

1ch, work 1dc in each tr and 1ch space across to end, working your last dc in top of 2<sup>nd</sup> chain from previous row, turn.

**Row 59 - 62;**

1ch, work 1dc in each dc across, turn. *At the end of row 62, Fasten off and weave in all ends.*



With wrong sides together and ensuring that the ribbon holes line up, sew down the two side edges with a small running stitch.

Turn inside out, thread the holes with pretty ribbon and sew on any buttons such as a star for the Christmas tree and a nose for Rudolph.

Ta-dah! You have made your very own Christmas Gift Bag!



This pattern is protected by copyright. Please do not re-sell, share or duplicate this pattern or design in any way. You may sell what you make with this pattern in small quantities. If you are selling via an internet shop, please link to [www.littledoolally.com](http://www.littledoolally.com). If you have any queries about this pattern, you can send your message to [littledoolally@gmail.com](mailto:littledoolally@gmail.com)